



ADDING INTERNET RADIO STATIONS

How to add your own Internet radio stations to FireBall's Radio Guide

Adding New Internet Radio Stations

Your FireBall is able to deliver a variety of Internet radio station programming through its connection to the Internet. Escient's pre-loaded Internet radio service provides a large variety of stations including Radio Free Virgin and various other stations from across the country. These stations can be selected for playback in the Radio Guide view.

In order to increase your listening enjoyment, FireBall also allows you to add new Internet Radio to the Radio Guide for playback. The FireBall will tune stations that broadcast either of the two formats.

- MP3 format (also known as Shoutcast) up to bit rates of 320kbps. Station addresses usually end in .m3u or .pls.
- WMA format up to version 8.1 and bit rates up to 192kbps. Station addresses usually end in .asf or .asx.

A complete list of the supported bit rates is listed in Appendix A. The procedure below will give you some examples of how to find new stations and add them to the Radio Guide.

Locating New Stations

The easiest method of locating additional, compatible internet radio stations is to search the Shoutcast internet radio database which contains upwards of 30,000+ freely available internet radio streams to date. Simply visit <http://classic.shoutcast.com> within your PC/Mac's web browser to access the Shoutcast database.

Once you have located a station, simply right click on the corresponding "Tune In" link and select Copy Shortcut (you will be pasting this into the URL field when adding it to the Fireball).

1	[Pop Rock Top 40] CLUSTER .977 The Hitz Channel	11681/18600	128	MP3
2	[Tune In] CLUSTER TechnoBase.FM - 24h house and More - 128k MP3	8890/20000	128	MP3
3	[Tune In] S K Y . F M - Absolutely Smooth Jazz - 24 hours a day And The Story Goes	7581/10023	96	MP3
4	[Tune In] 77 The 80s Channel Take Your Time (Do It Right) (1980)	6414/10300	128	MP3
5	[Tune In] [WORLD] CLUSTER #MUSIK.MAIN - 24H TOP 40 POP HITS 80S 90S NB AND MORE! www.RauteMusik.FM	6348/10333	128	MP3
6	[Tune In] s - It's Over Now	5720/11560	32	AAC+
7	[Tune In] CLUSTER -[: HOT 108 JAMZ :]- #1 FOR CONNECT FROM OUR WEBSITE	5712/10040	128	MP3
8	[Tune In] d Walk Radio Paradise - DJ-mixed modern & tonica & more - info: radioparadise.com	5214/10020	128	MP3
9	[Tune In] [Ambient Chill] CLUSTER Groove Salad: a nicely chilled plate of ambient beats and grooves. [SomaFM] Now Playing: Tosca - Damentag	5119/10110	128	MP3

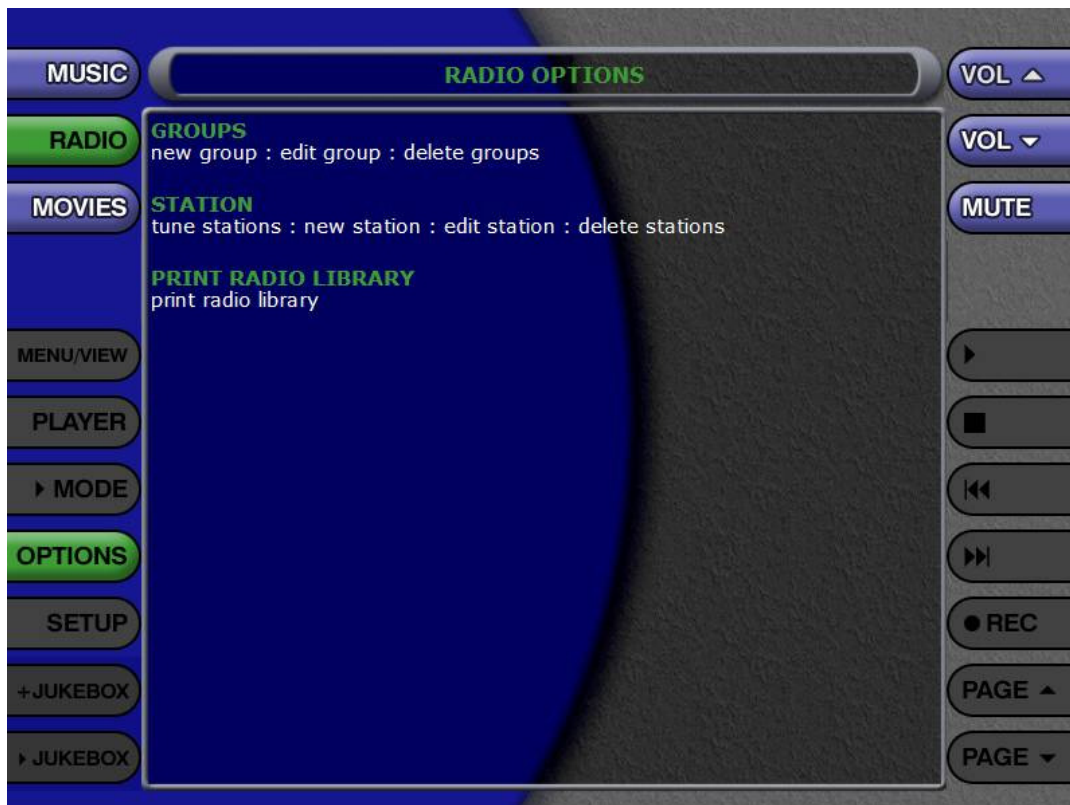
Accessing the Fireball Web Interface

The easiest method of adding your newly found internet radio station is going to be through the Fireball's web interface. Begin by assigning/viewing your Fireball's name under **Setup/Network/Server Settings**. Alternatively, you may also use the Fireball's IP address to access it's web interface from your PC/Mac. You will find your Fireball's IP address displayed under **Setup/Utilities/System Information**.

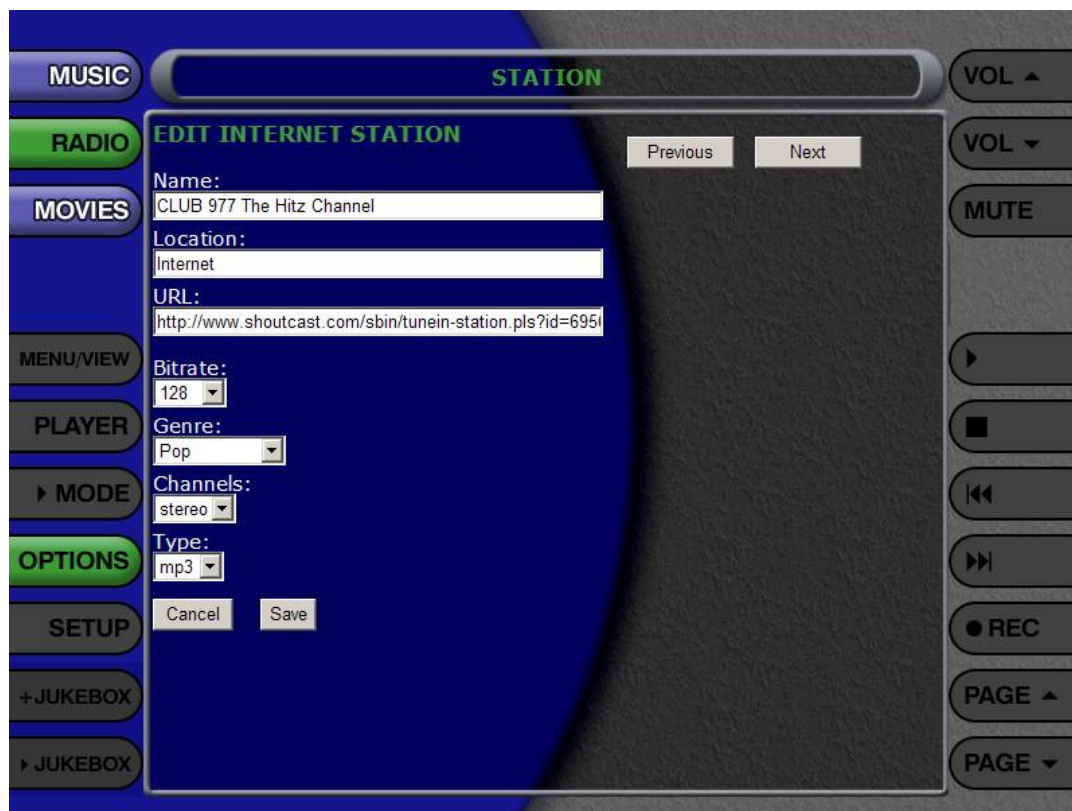
Simply type the unit's IP address or server name within the address bar of your web browser (Internet Explorer, Firefox, etc.) to access the Fireball web interface. No preceding www. or .com is needed; just the server name or IP. For example: <http://192.168.1.101> or <http://fireball>.

Adding a New Station through the Fireball Web UI

Within the Fireball web interface, click RADIO towards the top left of the screen, then click OPTIONS, and select NEW STATION.



Enter a name for the station, paste the station address you previously copied from the Shoutcast website into the URL field, and select MP3 as the station type (for all Shoutcast streams). All other fields are optional. Click Save to save your newly accessible internet radio station.



Listen to the New Stations

Select the station to playback while in the Radio Guide by either pressing the Select button, or the Play button while the station is highlighted. The station will begin playback by first locating the station, connecting to the server, buffering the data, then playing.

“Network Read Error” error?

The two most common reasons for receiving a “network read error” is either an invalid station URL or the format that the station is streaming in is not compatible and cannot be decoded by the Fireball. In order to determine the stream type, open the station URL within either Windows Media Player or WinAmp and view the properties of the stream. Both will display the format and often an alternate address that you may try entering for the station URL on the Fireball.

“Station Not Available” error?

There are several reasons why an Internet radio station is not available. At any time, the radio broadcaster may decide to no longer stream over the Internet, or the radio broadcaster may also select to change formats and no longer deliver a stream that can be played back by the FireBall. Escient will work hard to guarantee the quality of the stations that are provided in the Radio Guide, however, there can be no guarantee to those station created by the user.