

# Escient FireBall v4.2 Software Update

A guide to using the new features of the version 4.2 software update for Escient FireBall Media Managers

## Overview

This document describes the features included in the Winter 2006-2007 v4.2 software update for the Escient FireBall Media Manager products.

### **System Requirements**

One of the following Escient FireBall products:

- FireBall E2 Series
- FireBall DVDM Series
- FireBall MX Series
- FireBall AVX Series
- FireBall MP Series
- FireBall SE Series

Please note that FireBall E products that were updated to the FireBall E2 software update are not supported with the v4.2 2006 release.

## New Features

### **Jukebox Mode**

By default, FireBall plays music from a “playlist” or “disc” based song list, meaning that you select an Artist-Title, Title, or Cover and it plays the entire Album you selected (according to the current Play Mode). If you select something else, what is currently playing is stopped and the newly selected music starts to play. Alternatively, the Jukebox Mode allows you to create a list of songs (or a song queue if you will) to play while you are listening to something else, similar to the way you would use a traditional coin operated jukebox.

### **Adding Songs and Playing the Jukebox Queue**

Follow these steps to select and play music using the Jukebox Mode:

1. Press the **MUSIC** key on the remote to make sure you are in the Music Source Mode.
2. Locate and highlight any Genre, Artist, Album, or Song in the Music Guide that you want to play in Jukebox mode.
3. Press the **ADD JUKEBOX** key on the remote control to add the highlighted item to your Jukebox Queue.
4. Press the **PLAY JUKEBOX** key on the remote control to display the Music Player screen and play your Jukebox Queue.
5. If you want to add more music to your Jukebox Queue, press the **GUIDE** key on the remote to return to the Music Guide and use the **ADD JUKEBOX** key to add more music. You will notice that music you add doesn't play right away as it is added to the end of the Jukebox Queue.

*Note: You can also use the Toggle Key (double circular arrows) to add and remove music from the Queue when in Jukebox mode.*

*Note: A Checkmark will appear to the right of items in the Music Guide that are currently in the Jukebox queue.*



*Note: Some FireBall products will have the older ADD FAVORITES and PLAY FAVORITES keys on the remote control instead of Jukebox keys. Use these keys to add and play your Jukebox Queue.*

The Jukebox Queue is a special playlist that gets created and managed by the FireBall system but also shows up as a standard playlist in the Playlist group. The Jukebox Playlist is named 'My FireBall' – Jukebox where 'My FireBall' is the name you give your FireBall in the Setup / Network / Server Settings menu. It can be played, edited and deleted like any standard Playlist. Whenever the Jukebox Playlist is selected for playback, the Fireball will automatically go into Jukebox mode and the Music Player screen will display the Jukebox Active message at the bottom of the screen and the Music Guide will display checkmarks next to all items currently in the Jukebox Playlist.



The Jukebox Queue has a limit of 500 songs so FireBall will automatically balance and adjust the contents of the queue as you select items into it. For example, if your Jukebox Queue already has 500 items, you can still use the ADD JUKEBOX key to add another artist (which may contain several albums and dozens of songs) to the queue. FireBall will add tracks from the selected artist into the queue while automatically removing other tracks to make room for the new ones.

### **Reordering the Jukebox Queue**

Follow these steps to reorder tracks in the Jukebox Queue:

1. Make sure you are viewing the Music Player screen or press the GUIDE button to hide the Guide and display the Player screen.
2. Highlight the track you want to move.
3. Press the LEFT arrow key on the remote to move the highlighted track up in the Jukebox Queue or press the RIGHT arrow key to move it down.

### **Removing a Song from the Jukebox Queue**

Follow these steps to remove one song at a time in the Jukebox Queue:

1. Make sure you are viewing the Music Player screen or press the GUIDE button to hide the Guide and display the Player screen.
2. Highlight the track you want to remove.
3. Press the TOGGLE key to remove the highlighted track from the Jukebox Queue.

Note: You can also use the Toggle Key in the Music Guide to remove items from the Queue (including entire Genres, Artists, and Albums).

### **Clearing the Entire Jukebox Queue**

Follow these steps to remove all songs from the Jukebox Queue:

1. Press the Options key to display the Music Options menu.
2. Select the Jukebox Menu Item.
3. Select the Clear Queue button. All songs are cleared from the Jukebox Queue.

Note: These steps simply delete the Jukebox Playlist. You can also clear the queue by manually deleting the Jukebox Playlist.

### **Saving the Jukebox Queue**

Follow these steps to save the Jukebox Queue as a Playlist:

1. Press the Options key to display the Music Options menu.
2. Select the Jukebox Menu Item.
3. Select the Save as Playlist button.
4. Follow the same steps for creating and saving a New Playlist.

Note: A new playlist is created on your FireBall and your Jukebox Queue is left in tact. This is a way to periodically save of the Jukebox Queue for later listening.

### **Exiting Jukebox Mode**

Follow these steps to exit the Jukebox Mode and return to play mode.

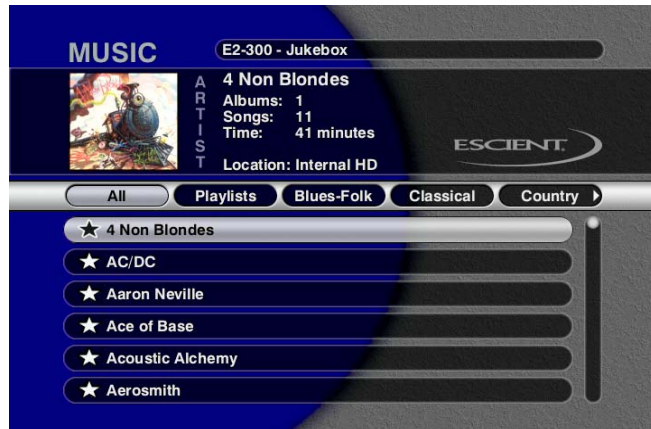
1. Press the OPTIONS key to display the Music Options Menu.
2. Select the Jukebox Menu Item.
3. Highlight and uncheck the Jukebox Mode checkbox.

4. Select the SAVE button to save your selection. FireBall will now play in title/album mode once again.

Note: You can also exit Jukebox Mode, by highlighting anything in the Music Guide and pressing the PLAY key on the remote (instead of PLAY JUKEBOX).

## New Music Guide Views

In addition to the existing four Music Guide Views, the V4.2 release includes two new ways to view your music collection, the **Hierarchical Artist View** and the **List View**.



**Hierarchical Artist View**



**List View**

The **Artist View** groups all albums by a given Artist into one guide row. Unlike the current Artist-Title view that shows each album by an artist in the <artist-Name> - <album-name> format, the new Artist View shows an artist with only one row and all the albums are expandable below the artist name.

The **Hierarchical List View** shows the entire contents of your FireBall's music library in one hierarchical list, similar to that of an Apple iPod. The List View's nine line browser allows you to navigate down into any Playlist, Artist, Album, Song, or Genre using the arrow keys on the remote.

## Customizing the Music Guide Views

You can select which Music Guide Views to cycle through when pressing the VIEW button on the remote. You can also enable just the views that you find most useful for browsing your music library. Select Music Options, then Guide Views to display the Guide Views options screen. Highlight then select/unselect each view that you want to include in the cycle.



### ***New Playlist and Group Edit Guides***

FireBall's Playlist and Group editing guide screens have been update to display the contents of the Playlist or Group while you are editing it. This improvement allows you to see what you have currently selected into the Playlist or Group without leaving the Edit mode. In both cases, a "This" group is placed at the far left of the group bar in the Music Guide. Scrolling the Music Browser all the way to the left highlights "This Playlist" or "This Group" and shows it's current items.



### **Removing Items from a Playlist or Group**

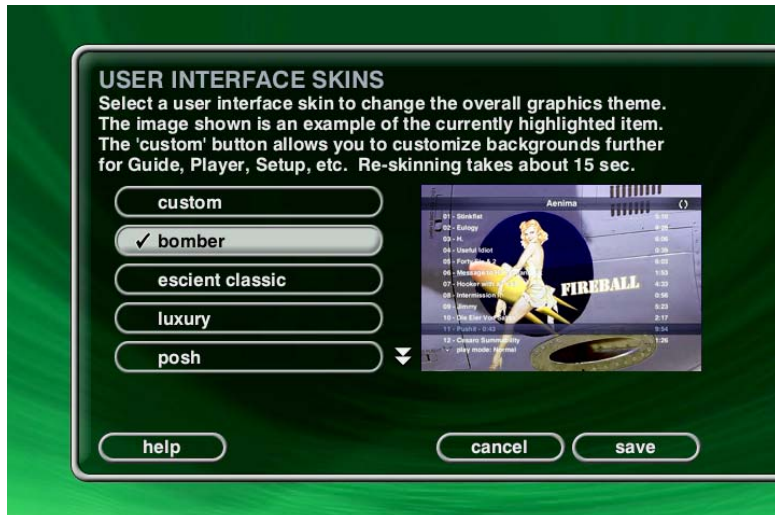
You can now remove items from within the Edit Guides by viewing the "This" playlist or group and un-selecting an existing item to remove it from the list.

### ***New User Interface Themes***

In addition to the user customizable background "skins", FireBall now includes several completely new graphics "Themes". These "themes" contain completely new sets of all graphic elements, not just new background images.

Follow these steps to select a new theme on your FireBall:

1. Press the SETUP key on the remote.
2. Select the General menu.
3. Select the User Interface Skins menu.
4. Select one of the built-in Themes.
5. Select the Save button to return to the Setup menu.



### ***International Language Support***

The FireBall V4.2 release contains International language support for all on screen menus, labels, and user interface text in five languages including:

- English
- French
- German
- Italian
- Spanish

Follow these steps to set your preferred language.

1. Press the SETUP key on the remote to display the Setup Menu
2. Select the GENERAL menu item.
3. Select the LANGUAGE menu item.
4. Select the desired language.



### ***AAC Audio Playback***

In addition to decoding and playing back several popular audio formats including: MP3, FLAC, and WMA, FireBall can now decode and playback music encoded in the AAC format popularized by Apple's iTunes software.

Note: FireBall can not directly decode the DRM protected AAC format music that you may have purchased from the iTunes Music Store for use on your computer or iPod. Apple does not license the playback of Apple DRM (called FairPlay) audio files on any third party devices. The Escient FP-1 Music Manager with Universal dock for iPod provides the ability for other FireBall's to integrate this DRM encode music into a FireBall based audio system.

### ***Escient FP-1 Support***

The V4.2 release is required if you want to integrate an Escient FP-1 Music Manager with Universal dock for iPod into your FireBall music system over your home network. The V4.2 software update allows an FP-1 to be selected as a Remote FireBall Server. This allows any iPod music (including the protected Apple FairPlay AAC files you purchased from the iTunes Music Store) to be merged into your FireBall's Music Guide.

### ***New Web Editing Features***

The V4.2 release includes a new feature for editing directly in the main web page, without having to click through to the Options/Edit Disc Info screen. Simply click the **EDIT** text button located at the top right of any Guide screen to directly enter Edit Mode.

