

# USING ESCIENT® VISION IN A NEVO® INSTALLATION

Document created by Nevo®

## Introduction

NevoStudio Pro® 2.0 offers the ability to control an Escient ([www.escient.com](http://www.escient.com)) Vision music server by enabling the user to browse through the content on both NevoQ50 and NevoS70. This implementation supports all the features common with the Escient Fireball. The Vision is controlled via 2-way RS232 using a NevoConnect® NC-50 and a USB to Serial Adapter.

### Notes:

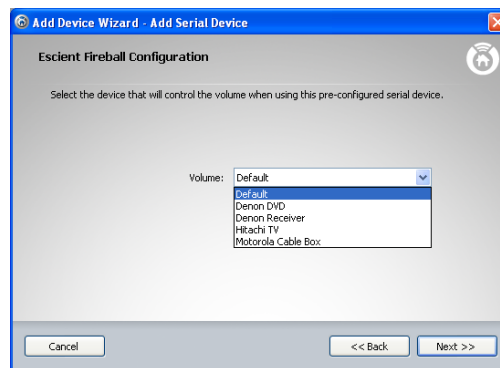
- 1) Nevo Controllers will provide metadata feedback on the display for Music, Radio and Videos.
- 2) Album art is not supported on the remote.
- 3) Due to the volume of data being transmitted during 2-way operations, hopping with multiple NevoConnect NC50's is not supported.
- 4) The Escient Vision must have software version 1.1.x.x or later installed to work with NevoConect.
- 5) The Radio option (using Rhapsody) is not supported by Nevo at this time. The Radio button will be displayed but it is not supported.

### Hardware requirements:

- Vision control requires a NevoConnect NC-50, a Nevo Serial Module and a Keyspan (P/N USA-19HS) USB to Serial Adapter. Other adapters may work, but this was the tested device.
- Vision does require a female to female null modem cable with the Nevo Serial Module.

### Programming

- Add the Vision device using the Fireball:
  - o Select Add serial device | Browse for pre-configured serial device.
  - o Choose "Escient Fireball" from the drop-down list.
  - o Identify which device will control the volume. Any device in the Job that supports volume control will be available in the pull down.

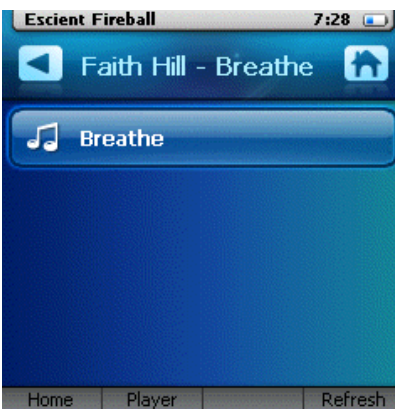
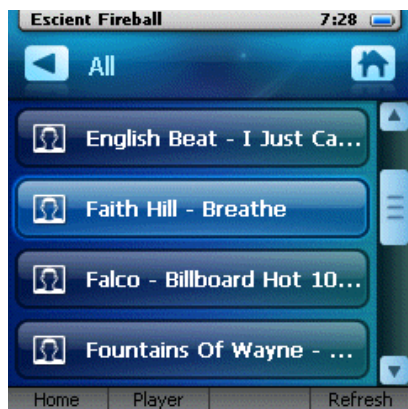
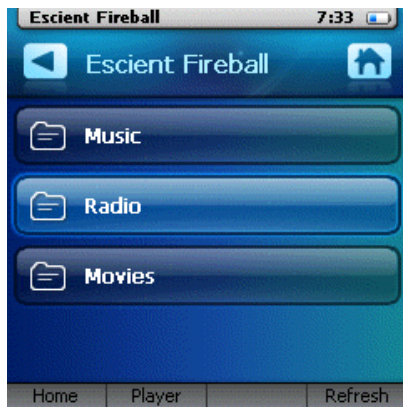


- Add a NevoConnect and define the specific port connection.
- Add a system jump to a button:
  - o From the Setup Jump dialog, select System.
  - o Select Pre-Configured Serial Devices then Escient Fireball.



## Operations

- All Nevo Controllers will display screens similar to those below when in Vision operations.
- The screens are a combination of list buttons (Browser) and currently playing (Player) info.
- The hard keys are programmed to do various actions and are only available on the Player screen, except for Volume keys, which are also available on Browser screens.



## Hard Keys

- Hard keys (aside from volume) are only available while on the Player screen.
- The hard key configuration is as follows for NevoS70:
  - o Home – exits 2-way mode and jumps back to standard home control mode.
  - o Volume Up, Volume Down, Mute – volume for the selected amplifier.
  - o Page Up, Page Down – in Browser, up or down one screen.
  - o Left arrow – back to previous screen.
  - o Up, Down arrows – in Browser, up or down one item.
  - o Right arrow – in Browser, select the currently highlighted item.
  - o OK – in Browser, select the currently highlighted item.
- The hard key configuration is as follows for NevoQ50:
  - o Same as NevoS70 for similar keys.
  - o Stop, Next and Previous – related iPod functions.
  - o Play and Pause – both support play/pause.

Notice: NevoStudio Pro, Nevo, and NevoConnect are registered trademarks or trademarks of Universal Electronics Inc., in the United States and/or other countries. Other product and company names may be trademarks of their respective companies.