

Pronto TSU9600 INTEGRATION

Using the FireBall with the Philips Pronto TSU9600 WiFi
Remote

Table of Contents

Pronto TSU9600 INTEGRATION **1**
 Using the FireBall with the Philips Pronto TSU9600 WiFi Remote 1
TSU9600 Integration Overview **3**
 Requirements..... 3
Configuration **4**
 Determine your FireBall’s IP Address 4
 Configuring the Escient Device in ProntoEdit Professional 4
 Downloading the Configuration file to your 9600..... 7
 Testing the Configuration 8
 Using the Escient Device on the 9600 9

TSU9600 Integration Overview

Philips has included two-way control of most Escient FireBall Media Servers using the TSU9600's built-in WiFi networking features. The 9600 uses the Escient two-way serial interface (the same interface that is used by Crestron and AMX control systems) over wireless 802.11 networks to provide automatic metadata and cover art directly on the 9600 with minimal setup. This feature provides the end user with two-way wireless control with full VGA color graphics for their entire music collection.

Please Note: The initial TSU9600 firmware does not support two-way DVD movie control or Internet Radio control. A future firmware update from Philips will provide these features.

For more information on the Philips Pronto remote control products, please visit the [Philips Pronto Website](#)

Requirements

- Philips TSU9600 Remote
- PC running Windows XP
- USB Cable (comes with the TSU9600)
- Supported Escient FireBall (see below)
- Existing 802.11 wireless network and wireless router

You must have a PC which is capable of running the Philips ProntoEdit Professional software and Pronto TSU9600 remote. You can download the latest version of the software from [the Philips Web Site](#). The Escient FireBall support is built-into the TSU9600. There are no additional files to download.

Supported FireBall products include:

- AVX Series
- MX Series
- DVDM Series
- MP Series
- FP-1
- ZP-1
- E2 Series
- E Series updated to E2 Software

Please note: The SE Series is not supported as it does not allow remote control over Ethernet networks.

This document assumes that you have followed the instructions that came with your TSU9600 for properly installing the ProntoEdit Professional software and the appropriate USB driver for the TSU9600.

Configuration

The Philips Pronto Edit Pro software is used to configure the TSU9600 for controlling your FireBall. Please follow the following steps to properly configure your FireBall and the TSU9600 to talk to each other.

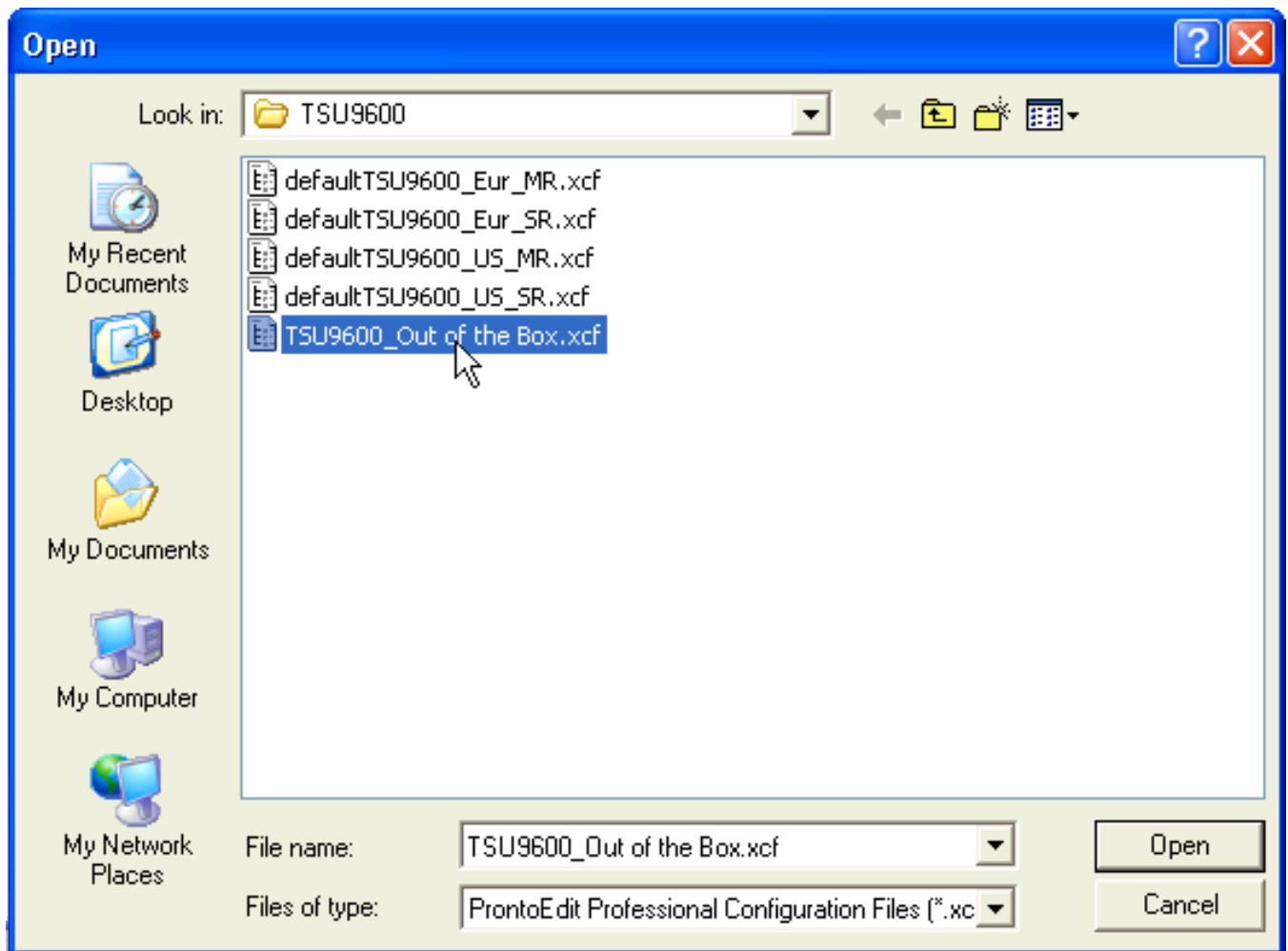
Determine your FireBall's IP Address

1. Press the **Setup** button on the remote.
2. Select **Network**.
3. Select **Ethernet Settings**
4. Copy the IP Address of your FireBall. You will need this to configure the Escient device in the ProntoEdit Professional software. Please note that you should use a static IP address for your FireBall. If you are using Dynamic, it may change and you will loose control of your FireBall.
5. Press **Setup** again to exit Setup mode.

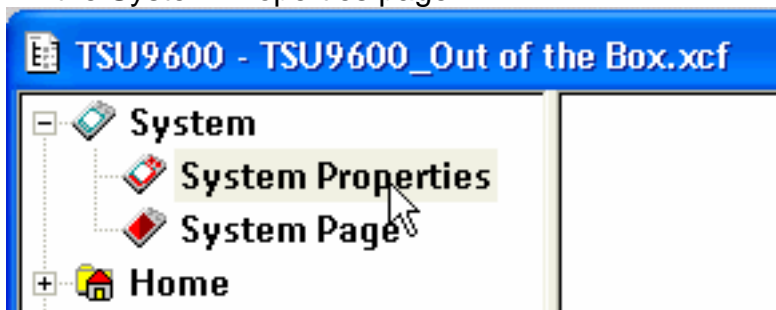
Configuring the Escient Device in ProntoEdit Professional

Please follow these steps to configure the FireBall device in the ProntoEdit Professional software...

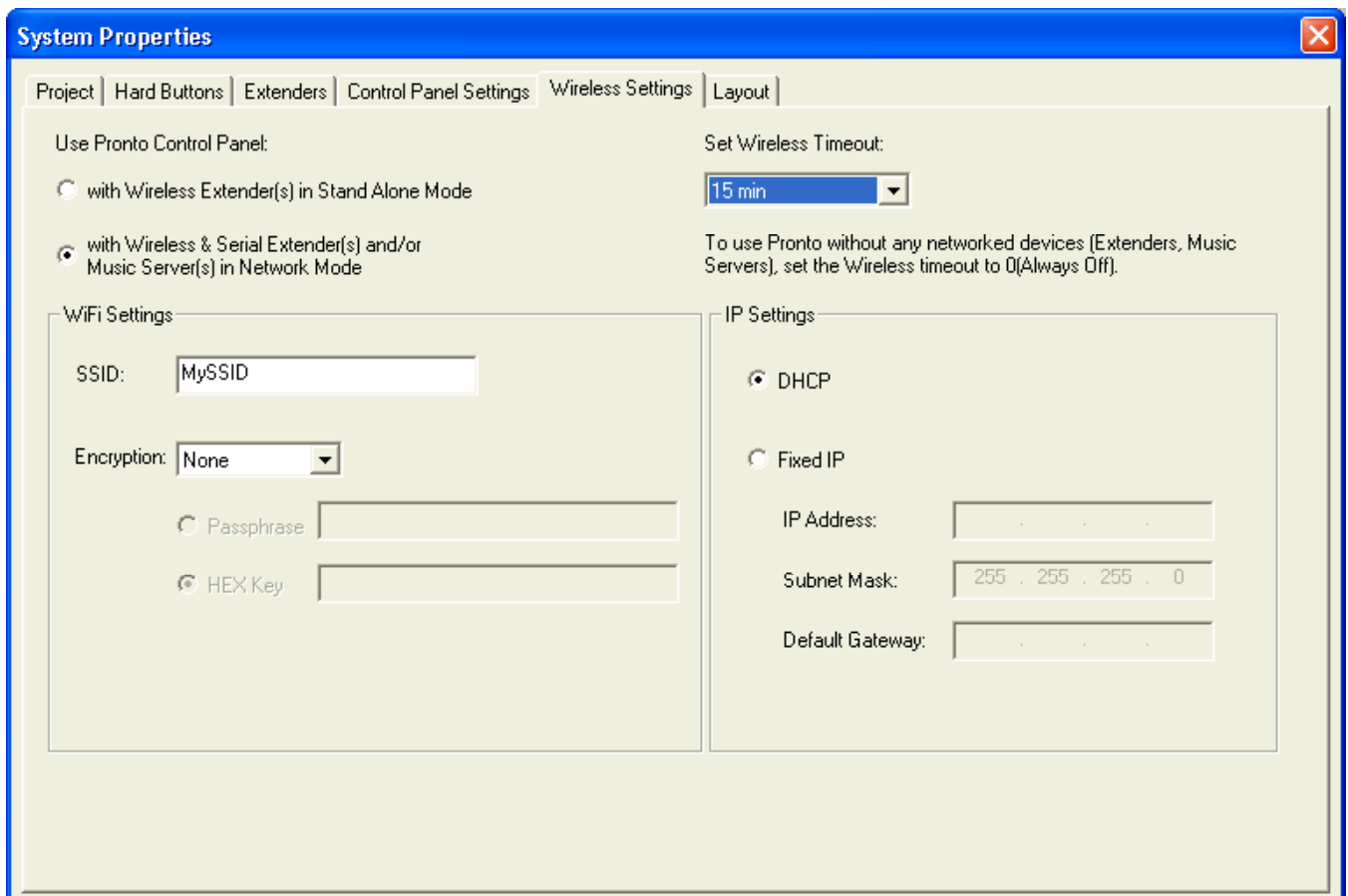
1. Launch the ProntoEdit Professional software on your PC.
2. Choose **Open Configuration...** from the File Menu.
3. Open the *TSU9600_Out of the Box.xcf* file.



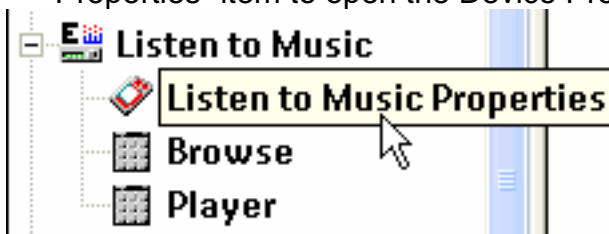
4. Open the System Device object and double-click the “System Properties” item to open the System Properties page.



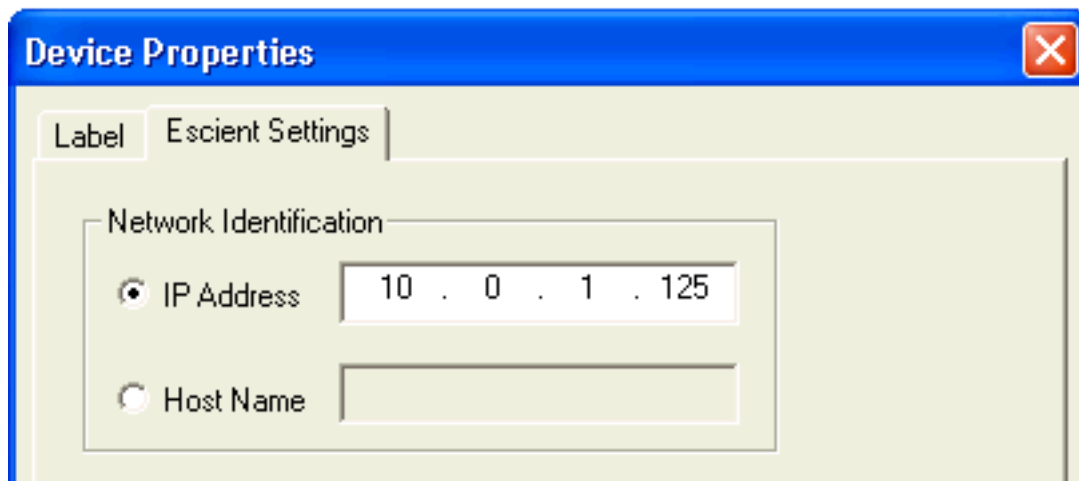
5. Select the **Wireless** tab in the System Properties page.



6. Make sure that “**with Wireless & Series Extender(s) and/or Music Server(s) in Network Mode**” is selected.
7. Enter the SSID of your wireless router and the proper encryption information if you are using the encryption feature on your wireless router.
8. Select **15 min** as the choice for the **Set Wireless Timeout** option.
9. Make sure that the IP Settings is set to DHCP.
10. Close the System Properties page.
11. Open the **Listen to Music** Device object and double-click the “Listen to Music Properties” item to open the Device Properties page.



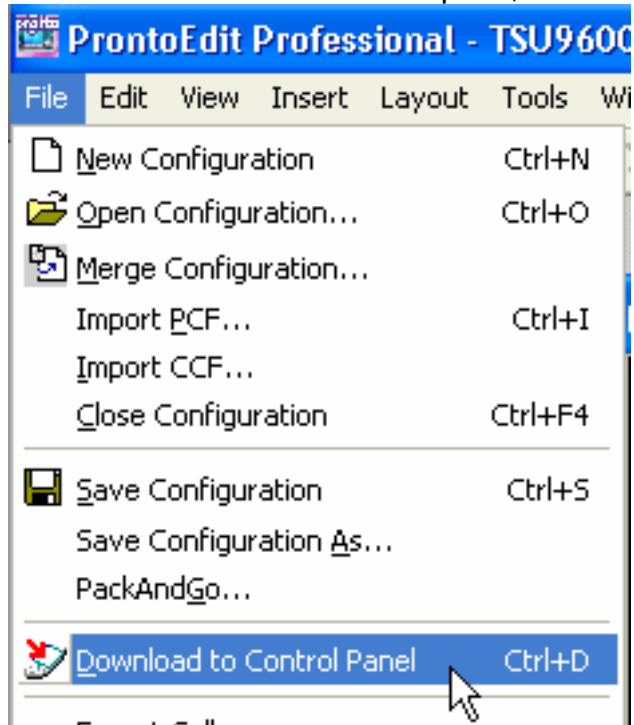
12. Select the **Escent Settings** tab on the Device Properties page.



13. Enter the IP Address of your FireBall and close the Device Properties page.
14. Choose **Save Configuration As...** from the File menu.
15. Enter a new name for your Configuration file and save it to your hard drive.

Downloading the Configuration file to your 9600

1. Make sure your TSU9600 is connected to your PC via USB and powered by the AC adapter.
2. Choose **Download to Control Panel** from the File menu.
3. The ProntoEdit Professional software will not locate, connect to, and download the configuration file to your 9600.
4. When the download is complete, disconnect the USB cable from the 9600



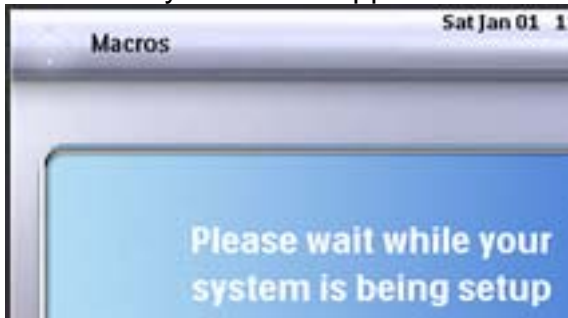
Testing the Configuration

Follow these steps to test your configuration on the 9600.

1. Tap the 9600 screen to wake it from sleep.
2. Select the **Listen to Music** icon on the 9600's Home Page to display the Escient two-way interface page.



3. Carefully watch the upper left hand corner of the Listen to Music page as it loads.



4. You should see the word "**Macros**" followed by "**Listen to Music**". If you see "**Connection Failed**" you have not connected to your FireBall. Double check your FireBall's IP Address and your Wireless network settings.
5. If everything was entered correctly, you will now be able to control your FireBall using the Escient Device module built into the 9600 and you should see the content of your FireBall in the scrolling list on the left. It will look something like this:



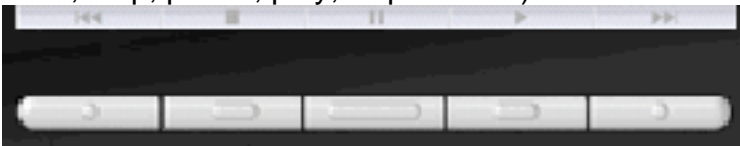
Using the Escient Device on the 9600

There are two views available in the Escient Device Module: Browser and Player. The Browser is similar to the "Guide" view on FireBall's own interface and the Player is the same as FireBall's "Player" view.

Use the touch screen, the navigation pad or the scroll wheel to navigate the music Browser.



Use the bottom row of hard buttons to control the FireBall's playback transport functions (skip back, stop, pause, play, skip forward)



Here is a list of the functions available on the Browse page:



- Songs – View a list of Songs - Artist on your FireBall
- Playlists – View a list of Playlists on your FireBall
- Groups – View a list of Groups or Genres on your FireBall
- Artists- View a list of the Artist – Titles on your FireBall
- Scroll Up/Down buttons – scroll the current list of Songs, Playlists, Groups or Artists
- Select – Select an item in the list or Play an item in the list

- Back – Return to the previous page.
- Song Info – Display a Player-like page showing the Artist, Album, genre, cover art, running time, and name of the selected song.
- Shuffle – Turns on the Shuffle Play feature for the current album
- Loop – Turns on the Repeat feature for the current album

The Player page shows the currently playing song and it's associated metadata including cover art.

